
Product Manual

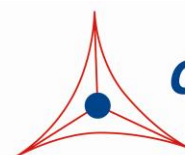
CytoSelect™ 24-Well Cell Invasion Assay (Basement Membrane, Fluorometric Format)

Catalog Number

CBA-111

12 assays

FOR RESEARCH USE ONLY
Not for use in diagnostic procedures



CELL BIOLABS, INC.
Creating Solutions for Life Science Research

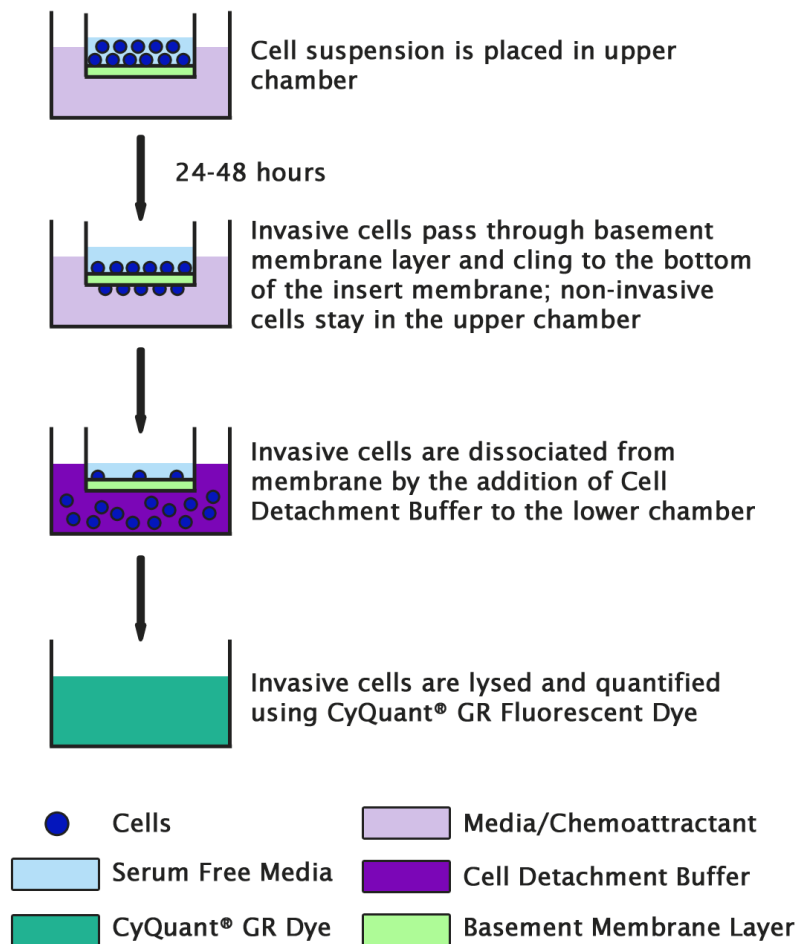
Introduction

The ability of malignant tumor cells to invade normal surrounding tissue contributes in large part to the significant morbidity and mortality of cancers. Invasiveness requires several distinct cellular functions including adhesion, motility, detachment, and extracellular matrix proteolysis. Metastatic cells produce many proteolytic enzymes (e.g. lysosomal hydrolysates, collagenases, plasminogen activators) while the expression of certain cell surface protease receptors is also increased.

Cell Biolabs CytoSelect™ Cell Invasion Assay Kit utilizes basement membrane-coated inserts to assay the invasive properties of tumor cells. It contains sufficient reagents for the evaluation of 12 samples.

Assay Principle

The CytoSelect™ Cell Invasion Assay Kit contains polycarbonate membrane inserts (8 µm pore size) in a 24-well plate. The upper surface of the insert membrane is coated with a uniform layer of dried basement membrane matrix solution. This basement membrane layer serves as a barrier to discriminate invasive cells from non-invasive cells. Invasive cells are able to degrade the matrix proteins in the layer, and ultimately pass through the pores of the polycarbonate membrane. Finally, these cells are dissociated from the membrane and subsequently detected by the patented CyQuant® GR Dye (Invitrogen).



Related Products

1. CBA-101-C: CytoSelect™ 24-Well Cell Migration and Invasion Assay (8µm, Fluorometric)
2. CBA-106-C: CytoSelect™ 96- Well Cell Migration and Invasion Assay (8µm, Fluorometric)
3. CBA-111-COL: CytoSelect™ 24-Well Cell Invasion Assay (Collagen I, Fluorometric)
4. CBA-112: CytoSelect™ 96-Well Cell Invasion Assay (Basement Membrane, Fluorometric)
5. CBA-112-COL: CytoSelect™ 96-Well Cell Invasion Assay (Collagen I, Fluorometric)

Kit Components (shipped at room temperature)

1. ECM Invasion Chamber Plate (Part No. 11001): One 24-well plate containing 12 ECM-coated cell culture inserts.
2. Cell Detachment Solution (Part No. 10101): One 5 mL bottle
3. 4X Lysis Buffer (Part No. 10102): One 5 mL bottle
4. CyQuant® GR Dye: (Part No. 10103) One 25 µL tube
5. Forceps: (Part No. 11005) One each

Materials Not Supplied

1. Invasive cell lines
2. Cell culture medium
3. Serum free medium, such as DMEM containing 0.5% BSA, 2 mM CaCl₂ and 2 mM MgCl₂
4. Cell culture incubator (37°C, 5% CO₂ atmosphere)
5. Light microscope
6. 96-well microtiter plate
7. Fluorescence plate reader

Storage

Store all components at 4°C.

Assay Protocol

1. Under sterile conditions, allow the invasion chamber plate to warm up at room temperature for 10 minutes.
2. Rehydrate the basement membrane layer of the cell culture inserts by adding 300 µL of warm, serum-free media to the inner compartment. Incubate at room temperature for 1 hour.
3. Prepare a cell suspension containing 0.5-1.0 x 10⁶ cells/ml in serum free media. Agents that inhibit or stimulate cell invasion can be added directly to the cell suspension.

Note: Overnight starvation may be performed prior to running the assay

- Carefully remove the rehydration medium (step 2) from the inserts without disturbing the basement membrane layer.

Note: It will not affect the assay performance if a small amount of rehydration medium is left in the compartment

- Add 500 μL of media containing 10% fetal bovine serum or desired chemoattractant(s) to the lower well of the invasion plate.
- Add 300 μL of the cell suspension solution to the inside of each insert.
- Incubate for 24-48 hours at 37°C in 5% CO_2 atmosphere.
- Carefully aspirate the media from the inside of the insert. Transfer the insert to a clean well containing 225 μL of Cell Detachment Solution. Incubate 30 minutes at 37°C.
- Completely dislodge the cells from the underside of the membrane by gently tilting the insert several times in the detachment solution. Remove and discard the insert.
- Prepare sufficient 4X Lysis Buffer/CyQuant® GR dye solution for all samples by diluting the dye 1:75 in 4X Lysis Buffer (for example, add 5 μL dye to 370 μL of 4X Lysis Buffer).
- Add 75 μL of 4X Lysis Buffer/CyQuant® GR dye solution to each well containing cells and 225 μL of Cell Detachment Solution. Incubate 20 minutes at room temperature.
- Transfer 200 μL of the mixture to a 96-well plate suitable for fluorescence measurement. Read fluorescence with a fluorescence plate reader at 480nm/520nm.

Example of Results

The following figures demonstrate typical invasion results with the CytoSelect™ Cell Invasion Assay Kit. One should use the data below for reference only. This data should not be used to interpret actual results.

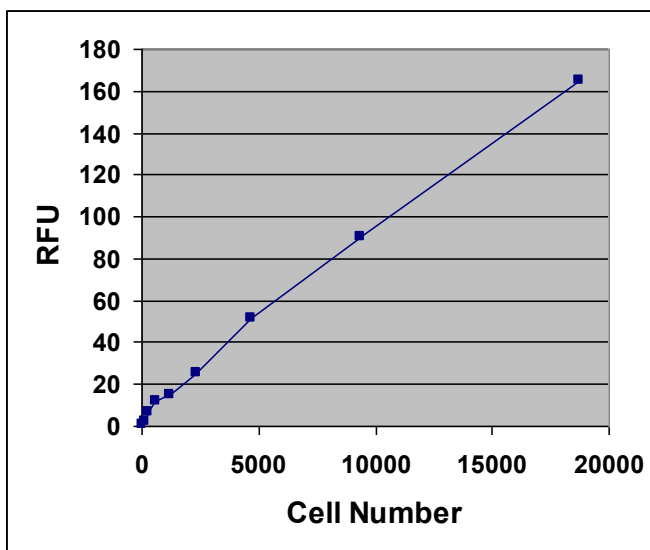


Figure 1: Quantitation of Human HT-1080. HT-1080 cell suspension was titrated in Cell Detachment Buffer; 150 μL of the diluted cell suspension was mixed with 50 μL of 4X Lysis Buffer/CyQuant® GR Dye (1:75).

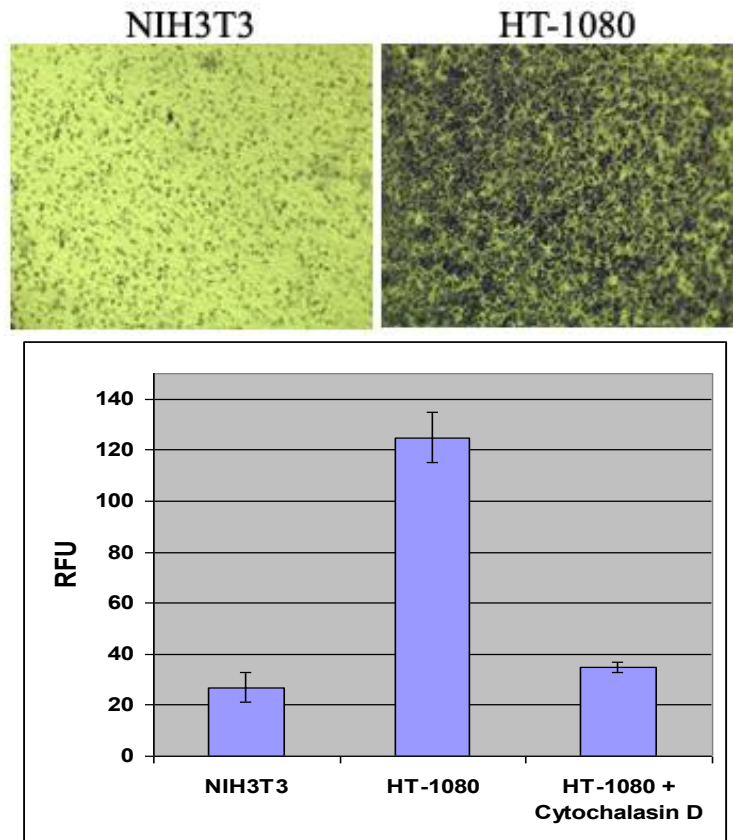


Figure 2. Human Fibrosarcoma HT-1080 Cell Invasion. HT-1080 and NIH3T3 (negative control) were seeded at 300,000 cells/well and allowed to invade toward 10% FBS for 24 hrs in the presence or absence of 2 μ M Cytochalasin D. Invasive cells on the bottom of the invasion membrane were stained (top panel picture) and quantified by CyQuant® GR Dye (bottom panel figure).

References

1. Erkell, L. J., Schirmacher, V. (1988) *Cancer Res* **48**, 6933-6937.
2. Montgomery, A. M. P., De Clerck, Y. A., Langley, K. E., Reisfeld, R. A., Mueller, B. M. (1993) *Cancer Res* **53**,693-700.
3. Monsky, W. L., Lin, C. Y., Aoyama, A., Kelly, T., Akiyama, S. K., Mueller, S. C., Chen, W. T. (1994) *Cancer Res* **54**,5702-5710.

Recent Product Citations

1. Cohen, L. et al. (2024). Examining the effects of biofield therapy through simultaneous assessment of electrophysiological and cellular outcomes. *Sci Rep.* **14**(1):29221. doi: 10.1038/s41598-024-79617-3.
2. Vu, T.H. et al. (2024). Apolipoprotein-B mRNA-editing complex 3B could be a new potential therapeutic target in endometriosis. *Sci Rep.* **14**(1):24968. doi: 10.1038/s41598-024-76589-2.
3. Inomata, Y. et al. (2024). Dickkopf 1 is expressed in normal fibroblasts during early stages of colorectal tumorigenesis. *Cancer Med.* **13**(2):e6992. doi: 10.1002/cam4.6992.

4. Matsumoto, M. et al. (2024). Protein interaction networks characterizing the A549 cells Klotho transfected are associated with activated pro-apoptotic Bim and suppressed Wnt/ β -catenin signaling pathway. *Sci Rep.* **14**(1):2130. doi: 10.1038/s41598-024-52616-0.
5. Nelczyk, A.T. et al. (2022). The nuclear receptor TLX (NR2E1) inhibits growth and progression of triple- negative breast cancer. *Biochim Biophys Acta Mol Basis Dis.* **1868**(11):166515. doi: 10.1016/j.bbadis.2022.166515.
6. Sugawara, S. et al. (2022). RNaseH2A downregulation drives inflammatory gene expression via genomic DNA fragmentation in senescent and cancer cells. *Commun Biol.* **5**(1):1420. doi: 10.1038/s42003-022-04369-7.
7. Drury, J. et al. (2022). Upregulation of CD36, a Fatty Acid Translocase, Promotes Colorectal Cancer Metastasis by Increasing MMP28 and Decreasing E-Cadherin Expression. *Cancers (Basel).* **14**(1):252. doi: 10.3390/cancers14010252.
8. Mori, T. et al. (2021). Enhancing the anticancer efficacy of a LL-37 peptide fragment analog using peptide-linked PLGA conjugate micelles in tumor cells. *Int J Pharm.* doi: 10.1016/j.ijpharm.2021.120891.
9. Pavlova, O. et al. (2021). HOPX Exhibits Oncogenic Activity during Squamous Skin Carcinogenesis. *J Invest Dermatol.* doi: 10.1016/j.jid.2020.04.034.
10. Song, J.H. et al. (2021). Noncoding RNA miR205HG Functions as an Esophageal Tumor-Suppressive Hedgehog Inhibitor. *Cancers.* **13**(7):1707. doi: 10.3390/cancers13071707.
11. Huang, J. et al. (2020). Identification of the fatty acid synthase interaction network via iTRAQ-based proteomics indicates the potential molecular mechanisms of liver cancer metastasis. *Cancer Cell Int.* **20**:332. doi: 10.1186/s12935-020-01409-2.
12. Katara, G.K. et al. (2019). Interleukin-22 promotes development of malignant lesions in a mouse model of spontaneous breast cancer. *Mol Oncol.* doi: 10.1002/1878-0261.12598.
13. Millien, G. et al. (2018). ETS1 regulates Twist1 transcription in a Kras G12D /Lkb1-/- metastatic lung tumor model of non-small cell lung cancer. *Clin Exp Metastasis.* doi: 10.1007/s10585-018-9912-z.
14. Paluszczak, J. et al. (2017). Lichen-derived caperatic acid and physodic acid inhibit Wnt signaling in colorectal cancer cells. *Mol Cell Biochem.* **441** (1–2):109–124.
15. Steury, M. et al. (2017). G-protein-coupled receptor kinase-2 is a critical regulator of TNF α signaling in colon epithelial cells. *Biochem. J.* **474**(14):2301-2313.
16. Lopez-Campistrous, A. et al. (2016). PDGFR α regulates follicular cell differentiation driving treatment resistance and disease recurrence in papillary thyroid cancer. *EBioMed.* doi: 10.1016/j.ebiom.2016.09.007.
17. Engel, N. et al. (2016). Antitumor evaluation of two selected Pakistani plant extracts on human bone and breast cancer cell lines. *BMC Complement Altern Med.* doi: 10.1186/s12906-016-1215-9.
18. Almami, A. et al. (2016). ING3 is associated with increased cell invasion and lethal outcome in ERG-negative prostate cancer patients. *Tumor Biol.* doi:10.1007/s13277-016-4802-y.
19. Uddin, M. et al. (2008). Marinobufagenin inhibits proliferation and migration of cytotrophoblast and CHO cells. *Placenta* **29**(3):266-273.
20. Ji, H. et al. (2007). LKB1 modulates lung cancer differentiation and metastasis. *Nature* **448**:807-810.

License Information

This product is provided under an intellectual property license from Life Technologies Corporation. The purchase of this product conveys to the buyer the non-transferable right to use the purchased

product and components of the product only in research conducted by the buyer (whether the buyer is an academic or for-profit entity). The sale of this product is expressly conditioned on the buyer not using the product or its components, or any materials made using the product or its components, in any activity to generate revenue, which may include, but is not limited to use of the product or its components: (i) in manufacturing; (ii) to provide a service, information, or data in return for payment; (iii) for therapeutic, diagnostic or prophylactic purposes; or (iv) for resale, regardless of whether they are resold for use in research. For information on purchasing a license to this product for purposes other than as described above, contact Life Technologies Corporation, 5791 Van Allen Way, Carlsbad CA 92008 USA or outlicensing@lifetech.com.

Warranty

These products are warranted to perform as described in their labeling and in Cell Biolabs literature when used in accordance with their instructions. THERE ARE NO WARRANTIES THAT EXTEND BEYOND THIS EXPRESSED WARRANTY AND CELL BIOLABS DISCLAIMS ANY IMPLIED WARRANTY OF MERCHANTABILITY OR WARRANTY OF FITNESS FOR PARTICULAR PURPOSE. CELL BIOLABS' sole obligation and purchaser's exclusive remedy for breach of this warranty shall be, at the option of CELL BIOLABS, to repair or replace the products. In no event shall CELL BIOLABS be liable for any proximate, incidental or consequential damages in connection with the products.

Contact Information

Cell Biolabs, Inc.
5628 Copley Drive
San Diego, CA 92111
Worldwide: +1 858-271-6500
USA Toll-Free: 1-888-CBL-0505
E-mail: tech@cellbiolabs.com
www.cellbiolabs.com

©2004-2026: Cell Biolabs, Inc. - All rights reserved. No part of these works may be reproduced in any form without permissions in writing.